

Verizon Connect Reveal

Reporting that turns data into insights and action



Verizon Connect Reveal

Turning fleet data into insights and action.

Verizon Connect Reveal tracks the fleet data that can make an impact on your business – things like where your vehicles are, how your drivers are behaving on the road and how gas is being used – and puts them into digestible dashboards, so you can act quickly. Reveal is a critical tool to help you get more done in less time, provide better customer service and ultimately improve business results.

Spot issues. Resolve them quickly.

Reveal takes your fleet's data and turns it into easy-to-understand maps, charts, graphs and reports. These insights show you where you can make immediate changes in your business, like where to reduce gas use by cutting down on idling. View information by vehicle or driver, so you can talk to the drivers who are speeding or monitor vehicle maintenance. Over time, you can see trends and where you fair with industry benchmarks.

Easy installation and set-up.

Reveal is an internet-based system, so you access it from any web browser. We also have a network of professional installers for the hardware components who will work around your schedule.

Be in the know in the field.

We understand that your business needs to move with you. Whether you're at home, in the office or out at a job, you can use nearly all of Reveal's functionality on our mobile app as you would on a desktop computer. You don't slow down, and neither should we.

See the full picture.

Knowing where your vehicles and drivers are each day goes beyond keeping everyone honest. It helps you see where there's opportunity to improve routing and dispatching, especially when emergency jobs pop up. It means spending less time calling every guy in the area when you can pull up a live map.



Live map

See your entire crew on one screen.

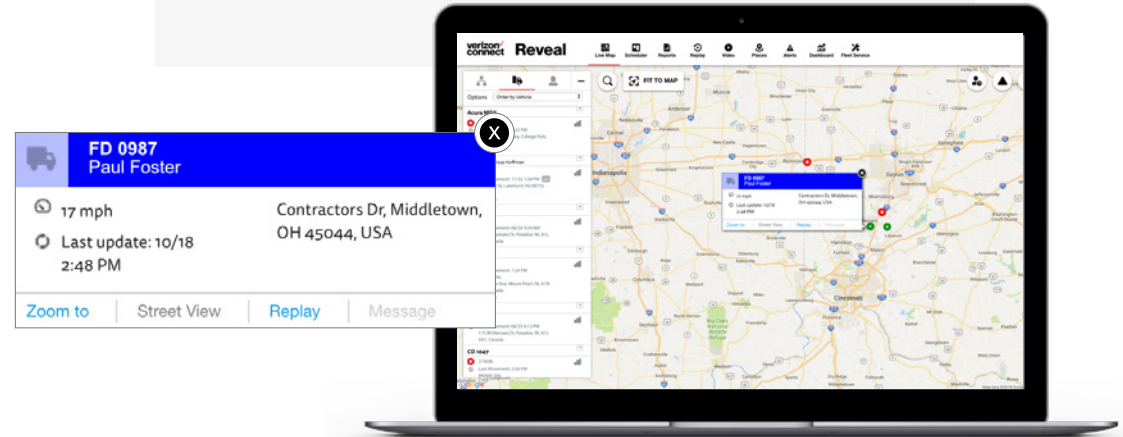
The live map feature shows you where all your vehicles are in near real-time. It can help you dispatch more efficiently, improve response times and reduce the time spent calling drivers for updates.

Quickly access more information.

The vehicle status pane shows you everything you need to know about any driver or vehicle at a glance. Right click to find the nearest vehicles, save a special location, send directions to your team and more. Solve problems faster and stay on schedule.

“ I can look at a board and know where the guys are. Now when a call comes in and it's close to their area, we know to hold the call for a minute, because we know someone's going to get clear.”

— Bill Howe, President of Bill Howe Plumbing

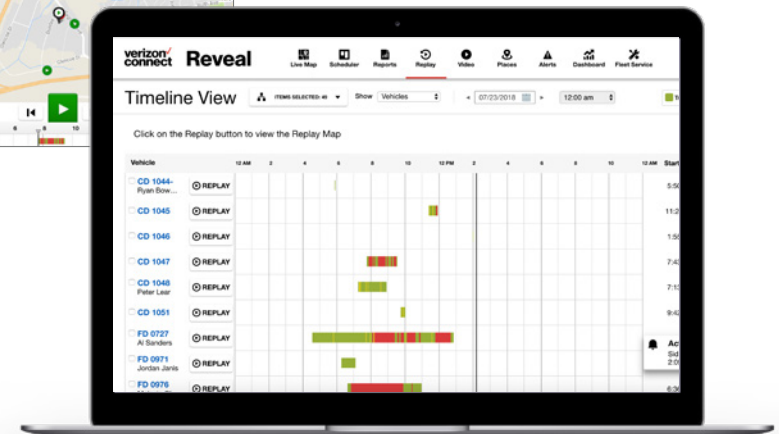
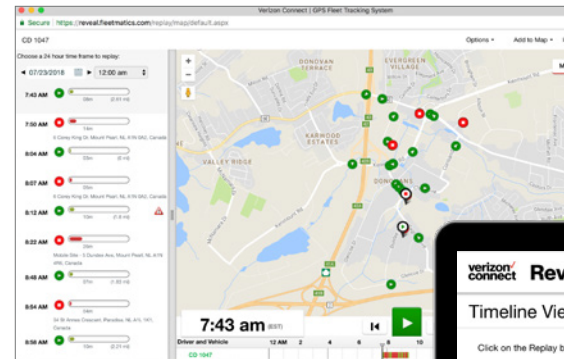


Route replay

Watch a vehicle's daily journey.

The timeline view in Reveal offers a visual and interactive display of vehicle and driver activity. You can watch a trip from start-up to shut down.

This feature helps you easily spot early starts or finishes and off-hour activity with the timeline graph. Vehicle status is color-coded, which highlights long stops and excessive idling. With one click, you can view interactive timeline segments for location and trip details or drill down into full replay mode for one or multiple vehicles.



Dashboard and trending

Metrics that matter.

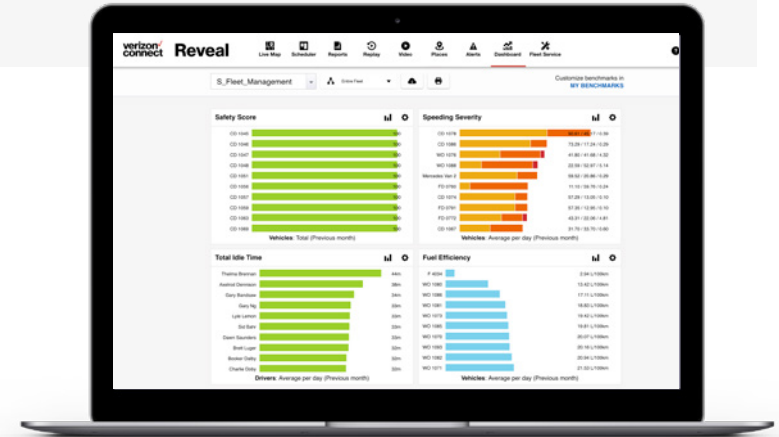
Reveal tracks the hours spent and miles driven by vehicle and driver, but it also translates that into dollars. You can see a display of your team's performance using your operational costs, such as, how an inefficient route can impact your payroll expense. Now you know activity in the field can impact your bottom line.

Our dashboard translates activities, like those below, into metrics that matter to your bottom line.

- After-hours driving
- Fuel purchased
- Modeled payroll expense
- Number of stops
- Safety score
- Speeding violations
- Vehicle maintenance expense
- Wasted fuel

Set the pace.

Measuring your team against benchmarks shows you how each driver is doing compared to others. You can quickly find out who your top and bottom performers are with stack rankings, and a driver scorecard provides data to help you coach for better behaviors. Plus, have the data you need to compare productivity and performance among drivers.



Alerts

Solve problems as they happen.

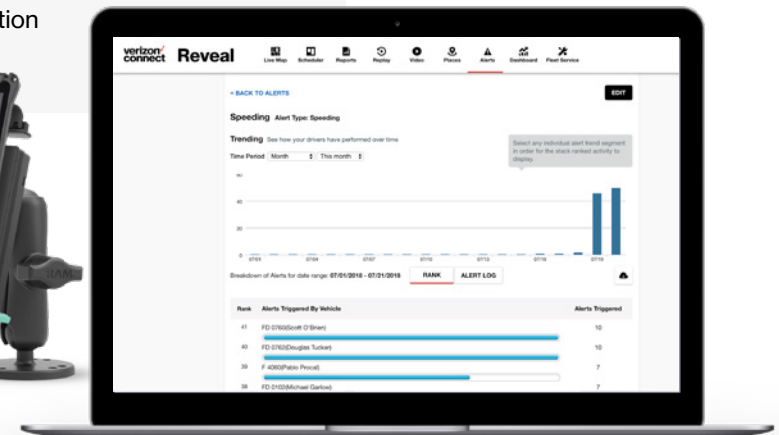
Instant alerts help you correct a situation with a vehicle or driver when something goes wrong. Reveal offers flexible policy-making tools to help ensure that an alert is worth acting on and, over time, shows trends in your policy enforcement. By setting a policy, you'll receive an alert the moment unwanted behavior occurs, such as speeding, extended idling or entering forbidden areas.

Policy types that would trigger an alert can be based on activity, idling, geofencing, harsh driving and ignition. Policy filters let you place a limit on the number of alerts that can be received in a day and eliminates repeat alerts.

You control who receives alerts, which alerts they get and how they receive them. You can also deliver alerts directly to drivers via email, text or safely to their device.

Some alert types include:

- Inactivity
- Late Start
- Sensor activation
- Speeding
- Towing



Reports introduction

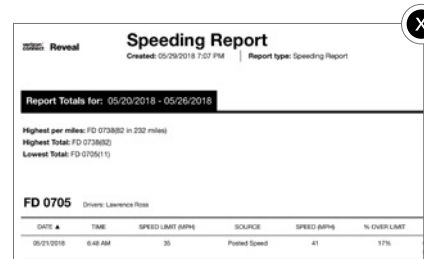
Delivered to you, the way you want them.

Reports are how business owners, fleet managers and other decision makers guide action. Beyond basic insights, Reveal gives you access to reports that provide a story, so action can be taken.

Reveal identifies which driver is in which vehicle, so your data is accurate. It also delivers reports to your inbox based on your preferences – daily, weekly or quarterly. The reports are easily scannable and allow you to click into more detail when needed. Share reports with your coworkers and give them the appropriate access level based on responsibilities.

“The Daily Report helps us coach drivers to correct driving habits, like idling and speeding, that lead to wasted fuel.”

–Tim Hutchings, Director of Safety and Compliance at Crane Transport



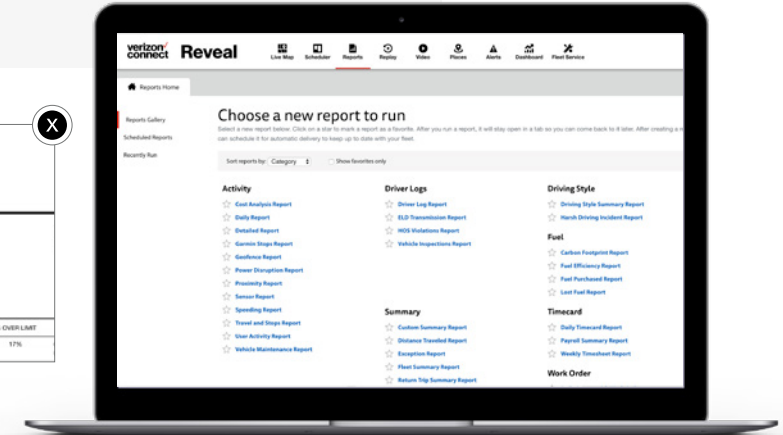
Speeding Report
Created: 05/26/2018 7:07 PM | Report type: Speeding Report

Report Totals for: 05/20/2018 - 05/26/2018

Highest per mile: FD 073882 (in 232 miles)
Highest Total: FD 073882
Lowest Total: FD 070511

FD 0705 Driver: Lawrence Rose

| DATE | TIME | SPEED LIMIT | SRPH | SOURCE | SPEED | SRPH | % OVER LIMIT |
|------------|---------|-------------|------|--------------|-------|------|--------------|
| 05/25/2018 | 6:48 AM | 35 | | Police Speed | 41 | | 17% |



Types of reports

The five main report types are based on fuel, activity, driving style, summary and timecard data.

Fuel reports

- Fuel Efficiency Report
- Fuel Purchased Report
- Lost Fuel Report
- Carbon Footprint Report

Activity reports

- Cost Analysis Report
- Daily Report
- Detailed Report
- Geofence Report
- Proximity Report
- Sensor Report
- Speeding Report
- User Activity Report
- Vehicle Maintenance Report

Driving style reports

- Rank drivers from 0 to 100 with our proprietary safety score.
- Driving Style Summary Report
 - Harsh Driving Incident Report

Summary reports

- Distance Traveled Report
- Exception Report
- Custom Summary Report

Timecard reports

Cross reference our reports with your accounting system to help streamline payroll and customer invoicing.

- Daily Timecard Report
- Payroll Summary Report
- Weekly Timesheet Report

Talk to your Sales Team for a complete list of all reports available.

Geofencing

Create boundaries for your business.

Geofencing is a feature that sets borders around geographical areas that are meaningful to your business. This can include repeat customer or pick-up locations, employee homes and your business address. Then see when your drivers enter and leave those areas. You can even drill down to see rankings, vital statistics and stop-by-stop details.

Reveal also analyzes the size, shape and activity around the geofences and proactively points out corrections so you can accurately capture activity.

Get quick access to:

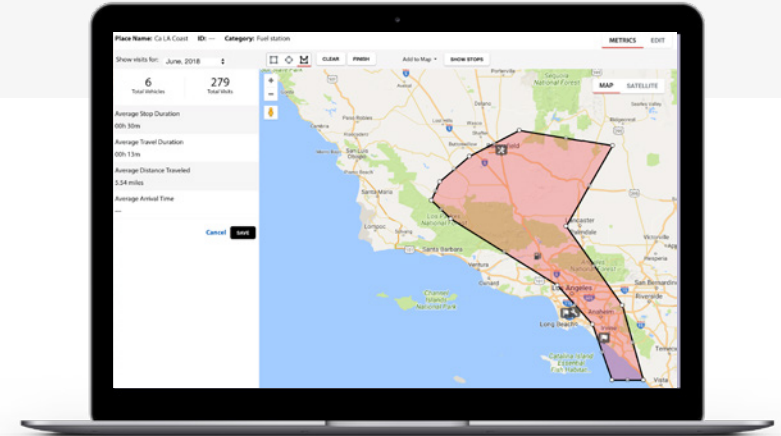
- Number of visits at a location and the details of when those stops happened
- Average time spent at every location
- Average time spent traveling to and from the location

Geofences to correct

This feature analyzes vehicle activity and lets you know when you may have a geofence that needs to be adjusted.

New suggested geofences

Analyzes activity and creates geofences for you.



Mobile app

Take your business wherever you go.

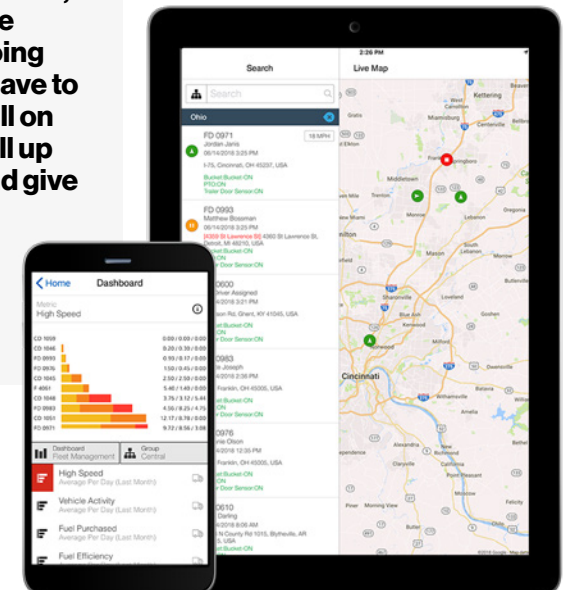
Handle your business' needs when you're in the office, at home or in the field with our mobile app. Get instant access to your fleet's information, so you can make decisions on-the-go.

- Quickly locate any driver in your workforce
- Dispatch vehicles from the field
- Look at performance on key metrics
- Confirm activity with powerful reports
- Monitor speeding, late starts and idling

Our mobile app for Android®, iPhone™ or iPad™, offers instant data on location, alerts, reports and your dashboard, so you can:

“ With Verizon Connect, I have a lot more peace of mind. When I am doing family things, I don't have to worry. When I get a call on the weekend, I can pull up the tracker quickly and give a solid answer.”

– Steve Hilker,
Owner of Steve Hilker
Trucking



Vehicle maintenance

More trucks on the road, not in the shop.

Reminders for vehicle maintenance are too often left to drivers to remember. Reveal helps you coordinate and manage your vehicle maintenance needs by scheduling reminders and getting alerts when your vehicles are due for service.

Reveal calculates vehicle mileage and fuel purchases, so you can accurately track and log your vehicle use and fuel consumption. You can also track each vehicle's past service and set alerts to remind your mechanic of upcoming service needs by date, vehicle mileage or hours of use.



Create a New Service Plan
Set up a new service plan for your fleet

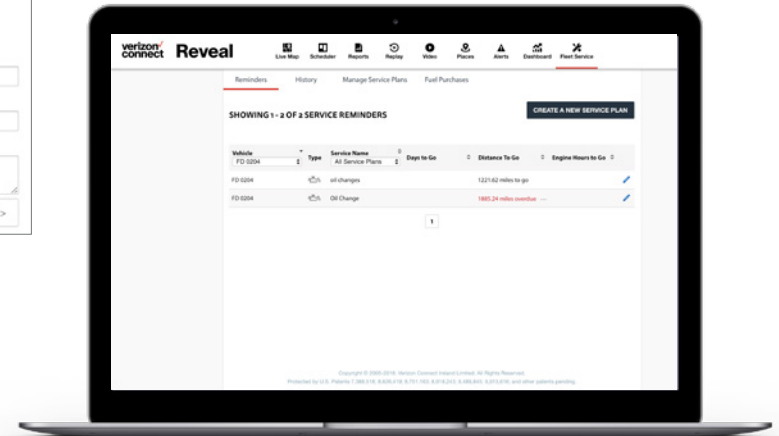
Assign an icon:

Name this service plan:
[Brake check]

Service Plan ID:
[0132]

Description

Next >>



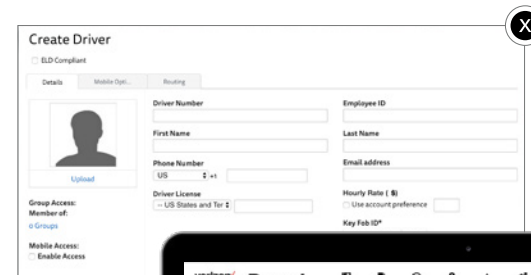
Set-up and use

Get started with ease, customize to suit.

Reveal was designed with non-technical users in mind, so it's easy to make changes as your company changes. Check boxes, radio buttons and drop-down menus provide an intuitive user interface, so you always feel like you know where to go next or what action you can take.

Managers, dispatchers and supervisors have different data needs. Simple permissions can specify who can see what information and limit access to only the features they really need.

The Reveal platform is easy to access without needing installation, maintenance or updates you need to download. You access it from any web browser and can rest assured that your data is backed up and protected by us.



Create Driver

E/D Compliant

Details Mobile Opt. Routing

Driver Number Employee ID

First Name Last Name

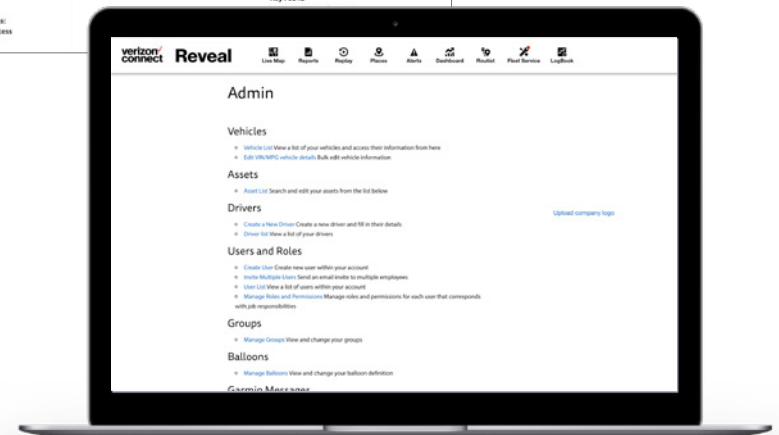
Phone Number Email address

Driver License Hourly Rate (\$)

Group Access: Member of: Use account preference

Mobile Access: Enable Access

Key Fob ID*



Turn your fleet data into insights and action.



Have questions? Get in touch with your Verizon Connect Sales Team at 866.844.2235.

verizon[✓]
connect

“ We have significantly reduced mishaps with the vehicles, we have finally been able to control gas consumption...we have been able to better schedule dispatches.”

—Armando Rivera, IT Professional at CISI, construction contractor